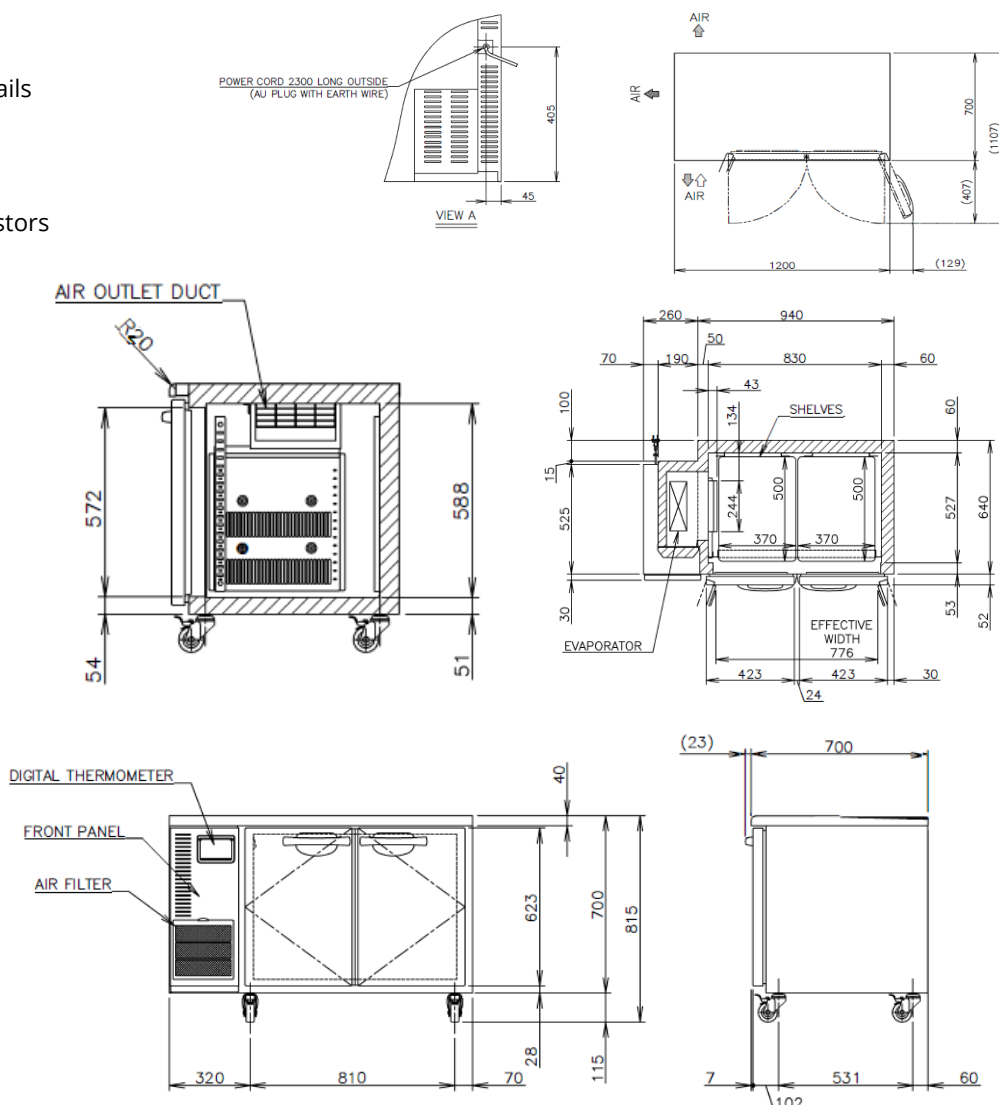


PRODUCT FEATURES

- Stainless Steel interior and exterior.
- Programmable Digital controller and display.
- 4 x 1/1 Gastronorm adjustable shelves with rails
- Compact slide out refrigeration unit for quick maintenance.
- 2 years parts and labour warranty.
- Comes standard with 4 x 115mm lockable castors (not legs).
- Optional Adjustable legs 150 - 180mm (Sold separately).

TECHNICAL DRAWING



PRODUCT SPECIFICATION



Exterior	Stainless Steel, Galvanized Steel (Rear /Bottom)
Interior	Stainless Steel
Max Storage Capacity	265L
Temperature Control	Microprocessor controlled Adjustable from -6 to 12°C
Condenser	Fin & Tube type
Outside Dimensions	1200mm (W) x 700mm (D) x 815mm (H)
Inside Dimensions	830mm (W) x 527mm (D) x 588mm (H)
Refrigeration System	Forced Air Circulation
Weight (kg)	83/93
AC Supply Voltage	1 PHASE 220 - 240V 50Hz /10Amp Plug
Amperage	Rated: 1.4A
Refrigerant	R134a
Operating Conditions	Ambient Temp.: 5-43°C Voltage Range: Rated Voltage $\pm 6\%$